



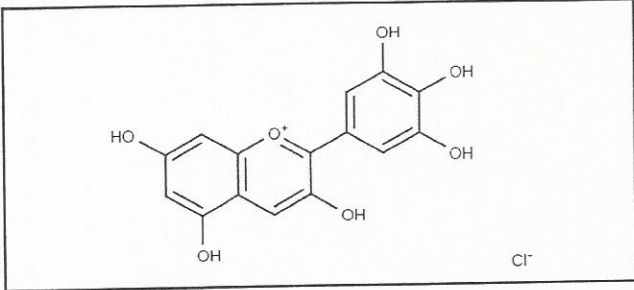
INDOFINE Chemical Company, Inc.

121 Stryker Lane, Bldg. 30
Hillsborough, NJ 08844 USA
Phone: (908) 359-6778; Fax: (908) 359-1179

Certificate Of Analysis

020904S DELPHINIDIN CHLORIDE Lot No.: 18121361

CAS RN	528-53-0
MOL FORMULA	C ₁₅ H ₁₁ O ₇ Cl
MOL WEIGHT	338,70



TEST	METHOD	UNIT	SPECIFICATION	RESULT
Appearance	Visual		Dark powder	Conform
Potency	UV		ε (548 nm, MeOH+0,1% HCl) = 38 800 +/- 3000	39230
Water content	KF	% w/w		9,2
Residual solvents	GC-HS	% w/w		0,2
Inorganics	ICP-MS	% w/w		< 0,1
Purity	HPLC	% area	≥ 97,0	99,3
Assay	Calculated (*)	% w/w		90,0

(*) Assay = Purity by HPLC x (100 - %water - %solvents - %inorganics)

CHROMATOGRAPHIC PURITY / HPLC

Column : Symmetry Shield RP18 - 4,6x150 mm - 3,5 μm

Temperature : 30°C

Flow rate : 1 ml/min

Mobile phase :

Gradient: B from 5% to 60% in 20 min then 60% to 100% in 5 min then 5 min isocratic 100%

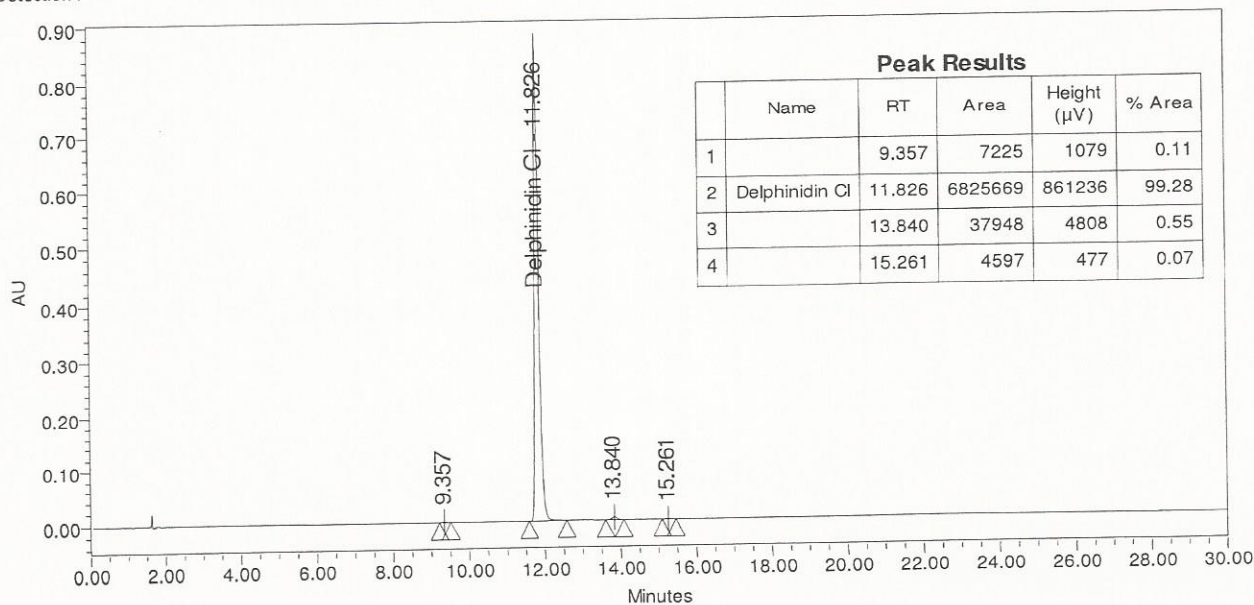
A = Water + 10% HCOOH / B = MeOH

Injection volume : 5 μl

Injection solvent : MeOH + 0,1% HCl

Detection :

UV 530 nm



LONG TERM STORAGE : Below -15°C in a dry and dark place

TRANSPORT CONDITIONS : Ambient temperature